

Beachfront Villas

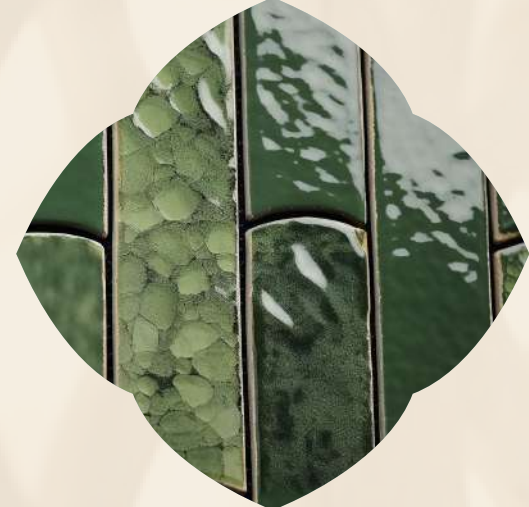
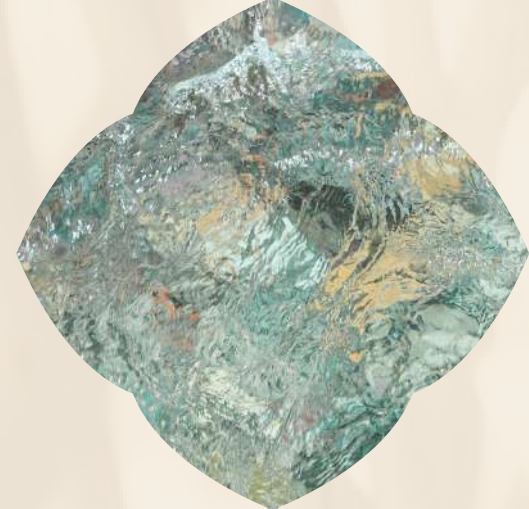


**BAYVILLAS**

DUBAI ISLANDS



**NAKHEEL**



# 1. Introduction

---

## 2. Dubai Islands

---

Location & Neighbourhood | Island B | Project Name | The Properties

## 3. Beachfront Villas

---

## 4. The Amenities

---

INTRODUCTION

Discover elysian living  
on Dubai Islands:  
*where Opulence meets  
Nature*

Embark on an extraordinary journey into a realm of unparalleled luxury and natural splendour with our exclusive residential project on Dubai Islands. Presenting a visionary opportunity to live in island exclusivity where breathtaking architecture combines with natural beauty.





THE ENERGY OF DUBAI AND THE ESSENCE OF THE SEA

# Dubai *Islands*



Dubai Islands is a place from which you can view and sense the timeless influences that have created this surrounding setting.

# Location & Neighbourhood

FEEL THE NEW RHYTHM OF DUBAI  
ISLANDS IN HARMONY WITH THE PAST

Designed in line with Dubai's overall vision to be the world's best city to live, Dubai Islands create an extra-ordinary lifestyle. This unique group of five Islands, spans 18sqkm and offers over 50km of splendid waterfront real estate, 20km of pristine beaches, 2km of landscaped parks and open spaces, and premium golf course overlooking the Arabian Gulf.





# BAYVILLAS

DUBAI ISLANDS

## OVERVIEW

### POINTS OF INTEREST

- Infinity Bridge: 6min / 6kms*
- Cruise Terminal: 19min / 12kms*
- Dubai International Airport: 18min / 13kms*
- Downtown Dubai: 26min / 19kms*

### MALLS

- Burjuman: 18min / 11kms*
- Dubai Mall: 25min / 18kms*

### SCHOOLS

- Victoria International School: 19min / 12kms*
- Pristine Private School Main Campus: 14min / 10kms*
- The Elite English School: 6min / 6kms*
- The Apple International School Primary Campus: 16min / 11kms*
- Swiss International Scientific School in Dubai: 30min / 24kms*
- Safa British School: 26min / 20kms*
- Collegiate International School: 34min / 30kms*

### HOSPITAL

- Dubai Hospital: 8min / 6kms*
- Canadian Specialist Hospital: 10min / 7kms*
- International Modern Hospital: 14min / 10kms*
- Clemenceau Medical Center Hospital: 22min / 17kms*



# A real bridge to the *future*

Embrace convenient access as you journey home to your luxury lifestyle with the unveiling of the Dubai Islands new access bridge. Spanning 1,425 meters across, Dubai Islands residents will benefit from direct entry and exit points on the Bur Dubai side of the city connecting directly to the Islands over the Dubai Creek.



# Dubai Island B

Residing on Island B means living amidst swimmable beaches, waterfront park promenade and prolific green spaces. An exceptional resort-style island that values and integrates its rapport with the landscape.

Live the island life close to the city yet worlds away.

The Island B masterplan consists of unique residential community, beach resorts and marinas. Each offers a different lifestyle experience presenting diverse amenities and services. Collectively they form an integrated and coveted residential island experience.



General View Beach Villas

# Bay Villas

## Dubai Islands

BE THE FIRST TO BE HERE

Bay Villas is the first step in luxury, connected living on Island B. An exceptional innovation combining natural beauty and prestigious amenities to create resort-style living.

This low density, resort setting presents 5 typologies from which to enjoy 1.3 km beach length & 1.3 km of rock water edge promenade.





Immersed in a panorama  
of eclectic luxury.

Feel a different rhythm of life where expertly designed residential areas ensure people and communities are connected by a desire to live well, with passion. A luxury interspersed with the local traditions that continue to intrigue.

General View Beach Villas



# The Properties

## YOUR ELEGANT ISLAND RETREAT AWAITS

Nestled along the prestigious shorefront promenade, our Villas redefine the art of living, offering an oasis of elegance against the backdrop of breathtaking water views.

Each property represents a different rhythm of life. Bay Villas invites you to match your lifestyle with the property that best defines your connection with the natural world and the services and community you desire.



# The Interiors

- Natural and warm island aesthetic finish palette
- “Barefoot Luxury” Design direction
- High quality natural and technical finishes selected for form and function with maintenance and longevity in mind.
- Neutral and accent colour finish palettes available for all schemes
- Kitchen with built-in appliances and features
- Ironmongery, brassware and ceramics from quality international brands
- Thoughtfully designed warm white LED lighting throughout
- A perfect pet and utility room for active families, with wash sink and storage.





A LIFESTYLE INSPIRED BY THE SEA, ENRICHED BY DESIGN.

# Beachfront Villas

TYPE A

TYPE B

TYPE C



## Listen to the sound *of the exclusivity*

Beachfront villas sprawl across exclusive beachfront villa of 1,232 to 1,313 sqm and epitomise the definition of a contemporary beach lifestyle with a nod to the past. Each 6 bedroom villa conveys a sense of privacy and luxury, open to expansive views and secluded by the landscape.

A private oasis connected to the city.



# Beachfront Villa *Type A*

SIX BEDROOM

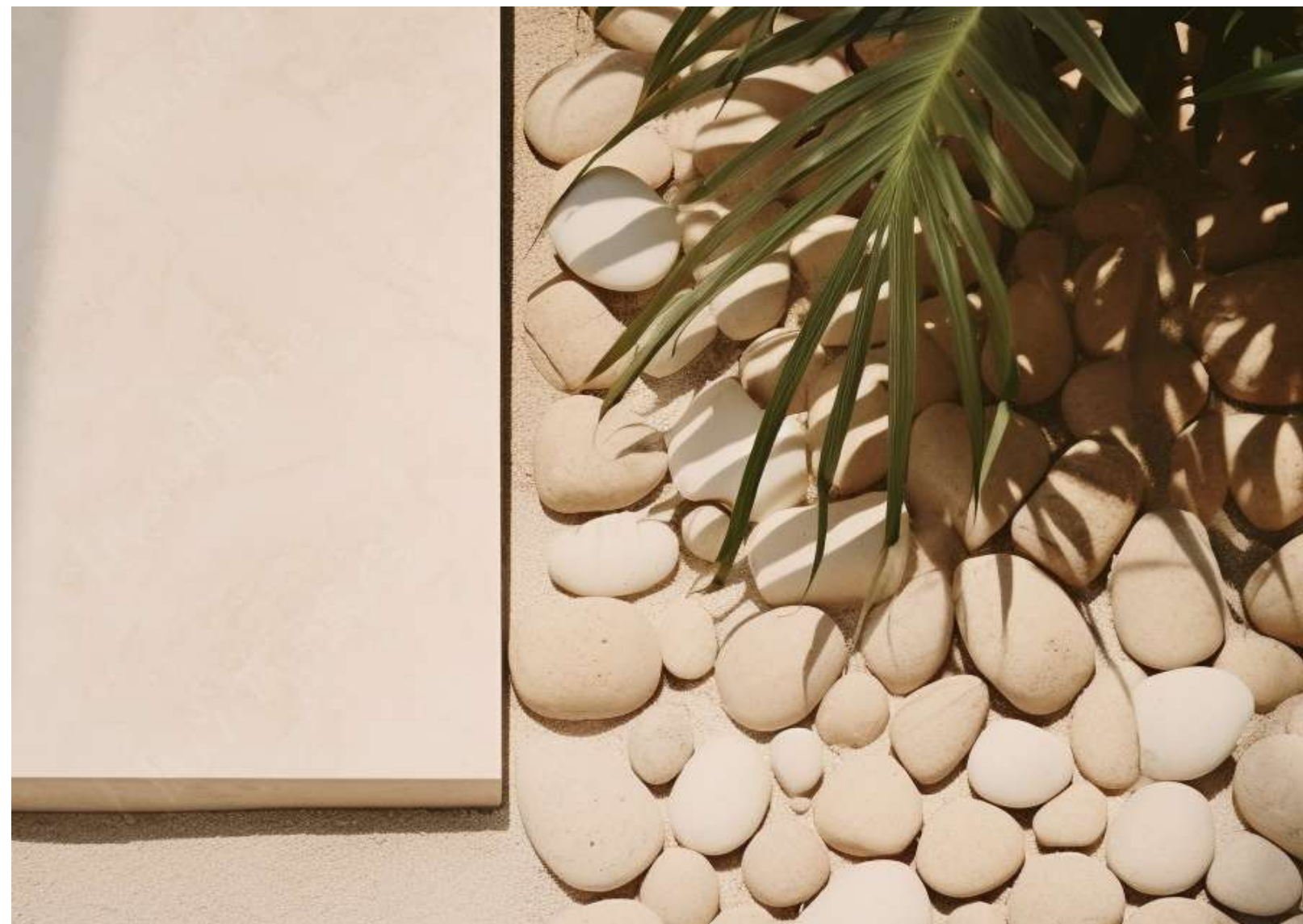
These 6-bedroom villas boast spectacular waterfront views from their prime front row location running alongside the prestigious shorefront promenade. This elegant villa features clean lines and a sophisticated design.

The generous sized plots provide ample space for a luxury beachfront villa, gorgeous spaces, and parking. Each villa comprises: ensuite bathrooms for all bedrooms, family and formal areas, daily + show kitchen, study area, elevator, maid's room, driver's room, laundry and all the utility spaces.

A generous master suite adorned with panoramic views and the boundless sea, has spacious walk-in-closet and bathroom spaces for a complete retreat.







Beachfont Villa  
TYPE A  
INTERIORS





Beachfront Villa - Living Room



Beachfront Villa - Bedroom



Beachfront Villa - Bathroom



Beachfront Villa - Living Room & Kitchen



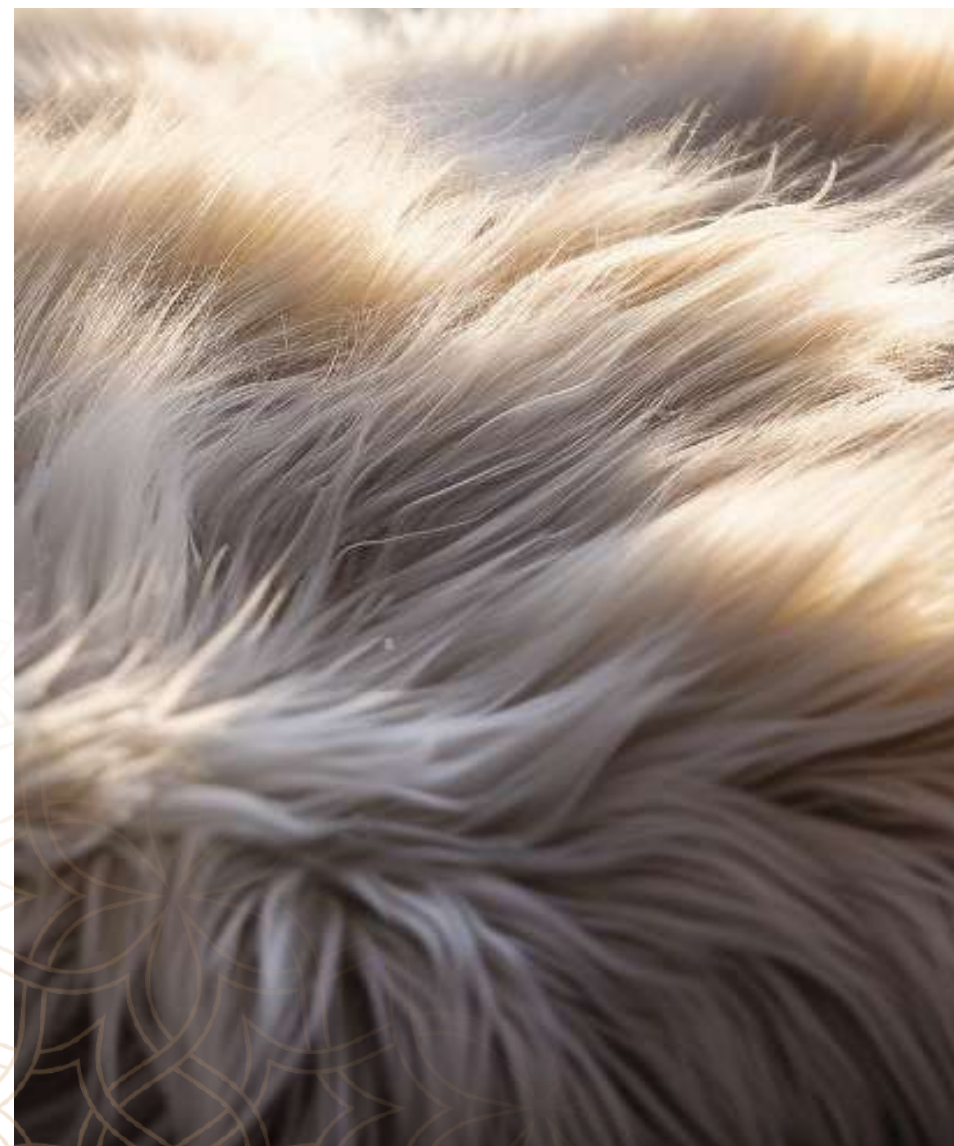
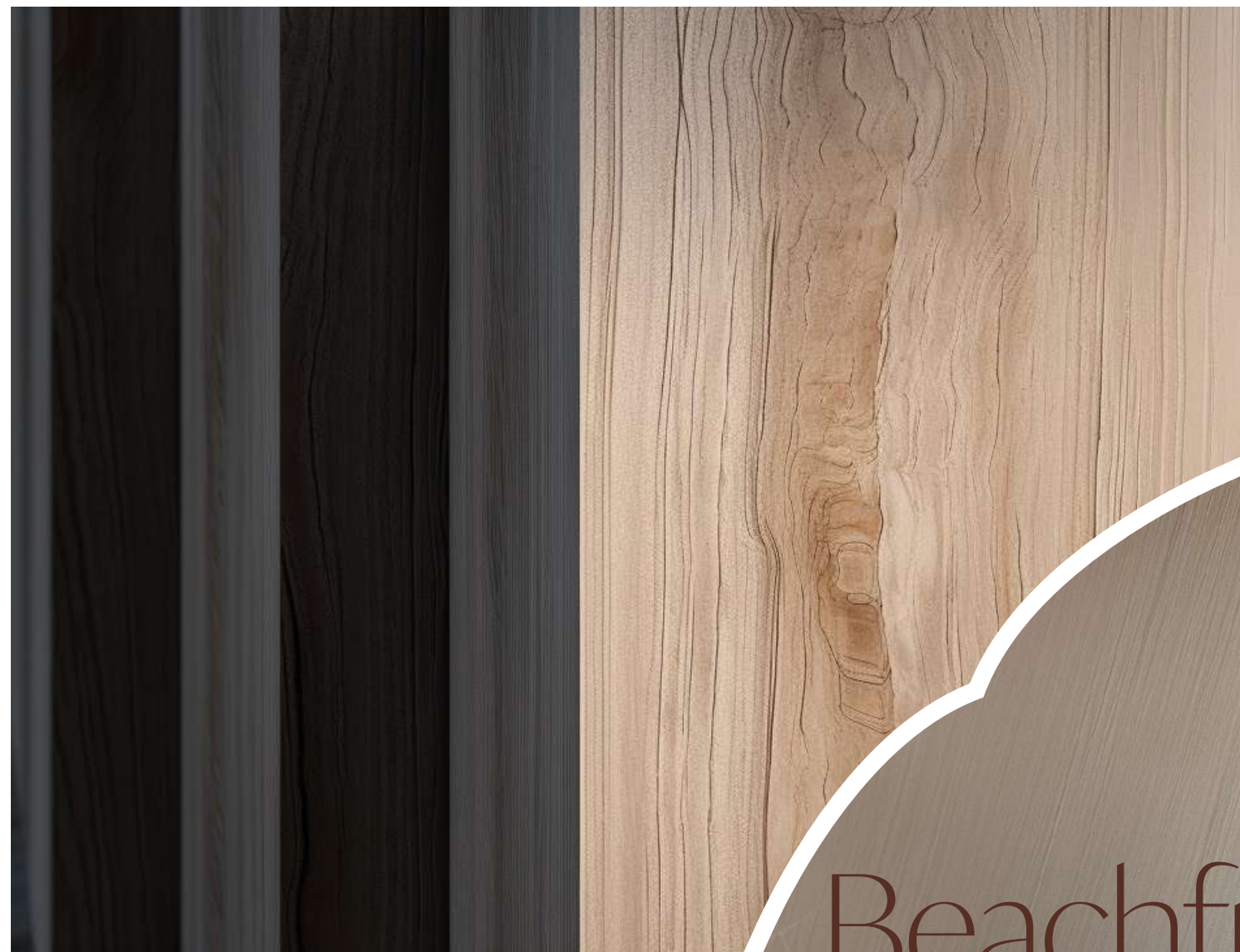
## Beachfront Villa *Type B*

SIX BEDROOM

Experience breathtaking views of the water and skyline in this villa, designed to capture the essence of pure panoramas. The spacious layout allows light to filter through, creating shadows and a cozy atmosphere. The design features offer a range of indoor and outdoor living spaces. This design not only provides shade for the expansive terraces below but also connects open-plan living and family spaces to the stunning views from both levels.







Beachfront Villa  
TYPE B  
INTERIORS



Beachfront Villa - Living Room



Beachfront Villa - Bathroom



Beachfront Villa - Bedroom



Beachfront Villa - Dining



THE PROPERTIES

Beachfront Villa - Kitchen



# Beachfront Villa *Type C*

SIX BEDROOM

Experience the unique charm of this villa with its distinct design featuring wide, playful slabs of varying thickness. These architectural elements form ample terraces on each floor with captivating views of the sea beyond. Not only they provide stunning vistas, but they also seamlessly blend the indoor and outdoor experience.

A spectacular double height space crosses the villa from the formal living on the ground floor going up to the living room on the first floor and continuing to the multipurpose room on the second. The linear stair is at the intersection of these interlinked double-height spaces making the vertical circulation a unique experience by itself.







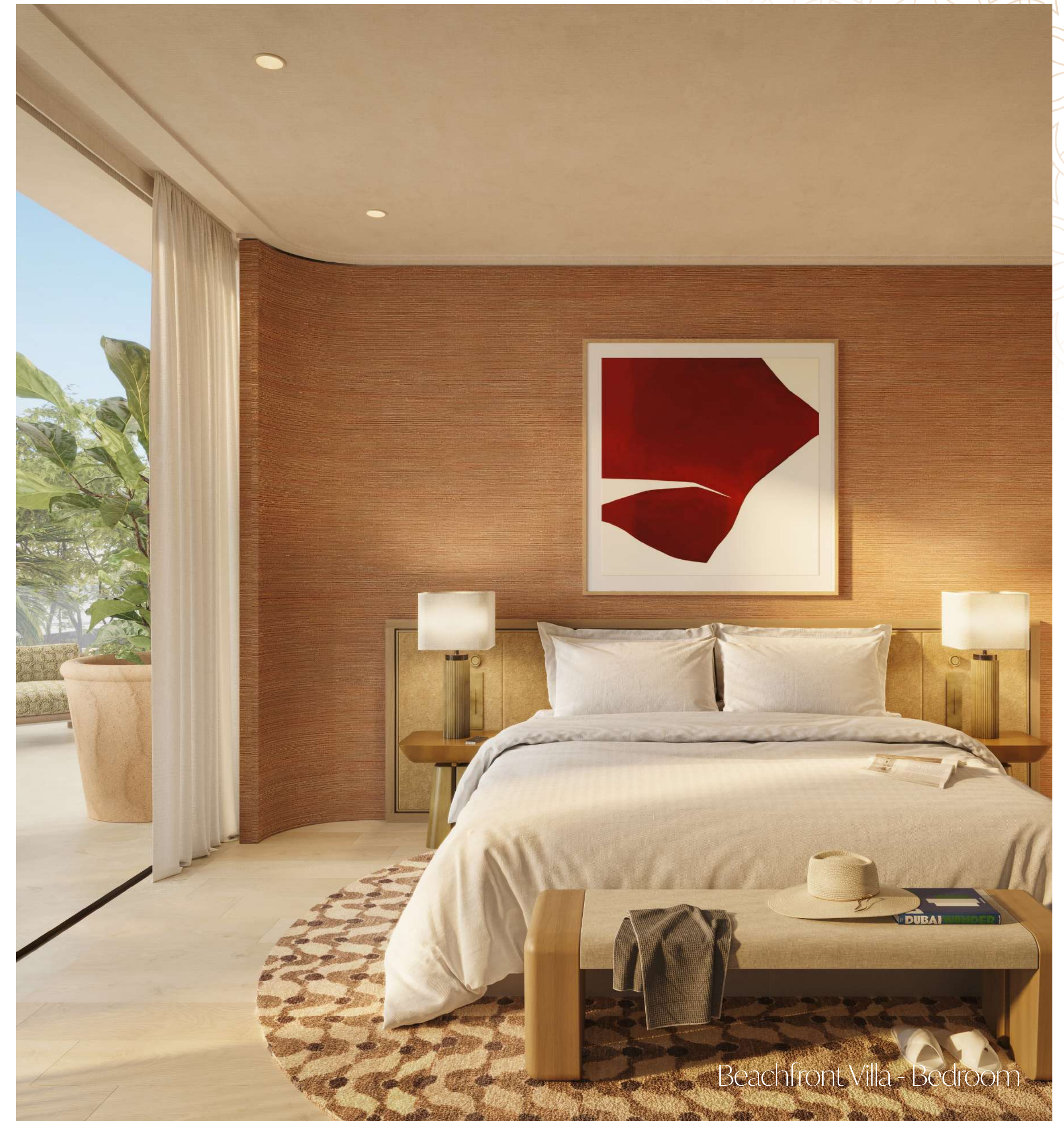
Beachfront Villa  
TYPE C  
INTERIORS



Beachfront Villa - Kitchen



Beachfront Villa - Bathroom



Beachfront Villa - Bedroom



Beachfront Villa - Living Room



ALL THE JOYS OF ISLAND LIFE

# The Amenities



Bay Villas is not just about residences; it's a lifestyle.

Amenities abound at Bay Villas offering the world's best in resort living, dining, leisure and sport presenting a lifestyle that will satisfy more than you desire.

Waterfront Villas

ALL THE JOYS OF ISLAND LIFE

*Away from the city,  
connected by quality.*

BE EMBRACED BY NATURE

An abundant integration of verdant landscaping and nature where Bay Villas' residents can indulge in access to pristine resort beaches with landscaped green corridors through the Bay Villas area connecting the Island B greenway to the waterfront and beaches.

Landscaped linear parks, private and secluded, offer a superb waterfront connection for walking and jogging as well as kids play areas and quiet spaces to relax.



Beach



Pool



Sitting  
Pavilion



Sports  
court



Fitness  
Area



Play Area



Gated Communities



Barbecue Area



Linear park



Beach Club



Shoreline park



Clubhouse

8 0 0 N A K H E E L

N A K H E E L . C O M

DISCLAIMER: All measurements,dimensions,coordinated and drawings, given as the Floor Plans in the literature are approximate and provided only for the purpose of marketing, illustration, information and general guidance as such drawings are not to scale. All the rooms, sizes,locations,orientations,dimensions,fixtures,fittings,finishes and specifications (including materials for,placement,size of rooms,windows,doors,balcony,furniture's inbuilt wardrobe etc.)provided in the floor plans may vary as the same have been taken from concept designs prior the actual development/construction and therefore their accuracy in relation to actual construction cannot be confirmed.Hence,we make no guarantee,warranty or representation as to the accuracy and completeness of the floor plan information as changes may be made during the development process,without notice. Always refer to latest IFC design available in the sales office for the most accurate representation of all construction details. Pool and landscape layout and configuration shown on floor plans are for general illustrative purpose only and are not provided by the developer.





BAYVILLAS

DUBAI ISLANDS



**NAKHEEL**