

PELAGOS

BY IGO





01

Live your fabulous



Welcome to your

THE VISION

Embrace the future of luxury living with Pelagos by IGO. With its prime waterfront location and striking architectural design, Pelagos is more than just another residential tower. Situated in the heart of Dubai Marina, it brings a new level of fabulous to the area, with breathtaking, uninterrupted views and a unique vibrancy that redefines the meaning of home.

Discover a lifestyle revolution.

theatre of dreams



Reputation in excellence

Invest Group Overseas (IGO) provides real estate developments and masterplans that create premium properties.

Established in 2004, IGO has delivered landmark projects to buyers and investors in cities and countries worldwide, ensuring maximum return on investment and contributing significantly to growth.

Today, IGO's impressive portfolio includes some of the world's most sought-after properties, by its most meticulous clients, and serves as a testament to their reputation for quality, excellence and investment expertise.

IGO TEAM.





Grandeur



elegance

Discover Pelagos, where stunning architectural design sits against a backdrop of waterfront beauty. In a prime location in Dubai Marina, Pelagos residences offer breathtaking views, contemporary luxury and a sophisticated lifestyle in a unique, vibrant setting.



A limited edition

THE MARINA

Pelagos brings a stunning new shape to the Dubai Marina skyline, with a unique architectural design that redefines fabulous. With equally beautiful interiors and state-of-the-art amenities, Pelagos is the building the Marina has been waiting for.

address



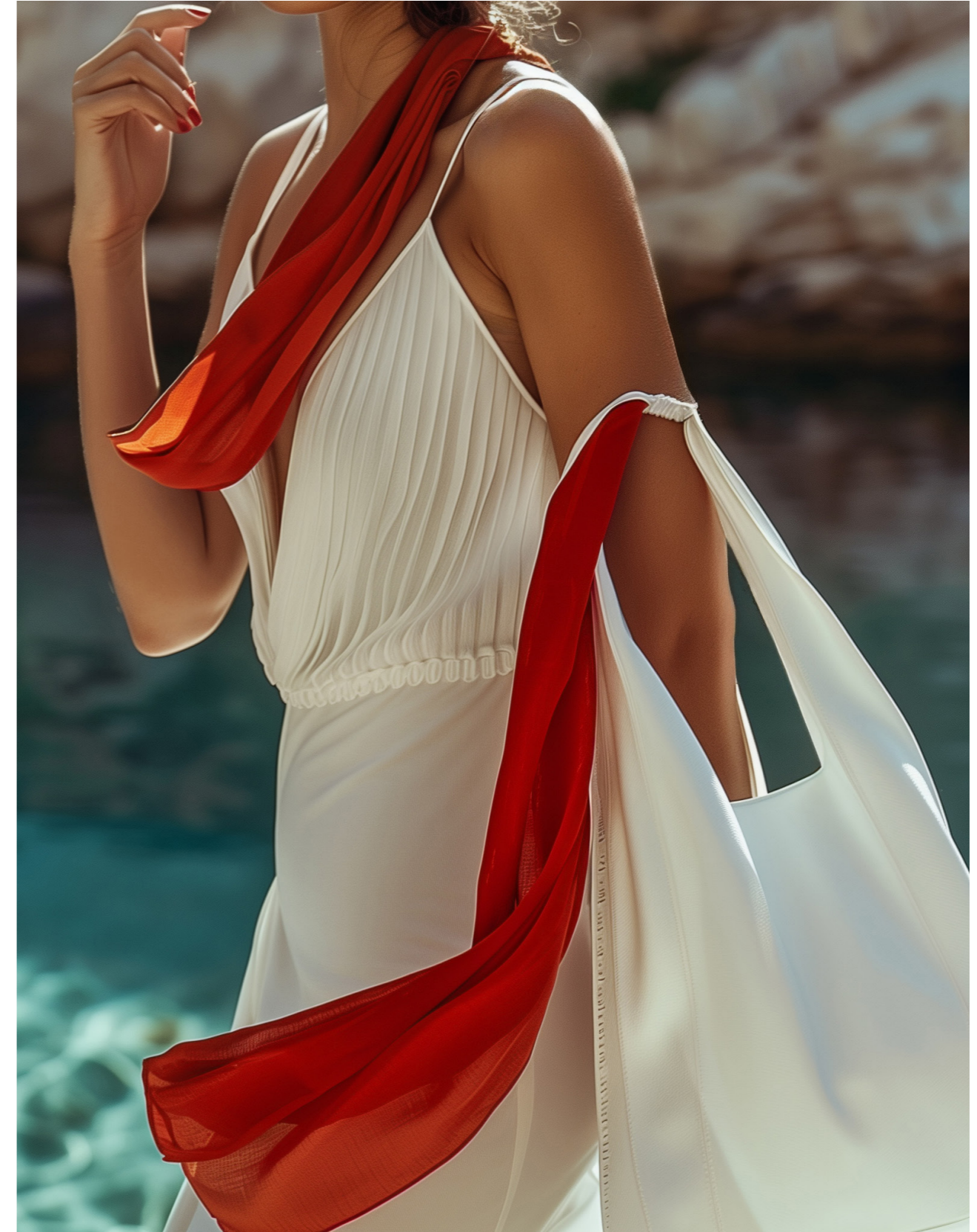




A marina of possibilities

Indulge your senses with a perfect balance of ease and excitement.

From the cutting-edge boutiques, irresistible dining spots and vibrant nights out, to days spent strolling next to the serene Arabian Gulf, Pelagos gives you the best of every moment in Dubai Marina.



THE LOCATION

Perfectly positioned

Pelagos combines effortless waterfront elegance with vibrant urban chic. Indulgent dining and luxe shopping are just moments away, with limitless views of glittering sea and sky as a constant stunning backdrop, while seamless transport options give you easy access to Dubai's key destinations. Sophisticated, dynamic and convenient, Pelagos is the place to be.

PALM JUMEIRAH

10 minutes

DUBAI MARINA MALL

5 minutes

BURJ AL ARAB

15 minutes

BURJ KHALIFA

20 minutes

DUBAI MALL

15 minutes

DXB INTL. AIRPORT

22 minutes



Dubai Marina is one of the city's most sought after locations. Generously catered to by beach clubs, restaurants, cafés, lounges, chic bars and luxury retail hotspots, this unique waterfront neighborhood has it all.

Discover a place to indulge, unwind and soak up the very best that life has to offer.



Unmatched



experiences





Where views meet vibrance



Dubai Marina is the ideal setting for Pelagos. With its stunning views and carefree atmosphere, this vibrant community draws visitors from around the globe.

Perfectly positioned for the marina lifestyle, yet with the exciting energy of Dubai just minutes away, this location has all you could desire, right within your reach.



THE RESIDENCES

Sun Sea View

The Pelagos residences exude a sense of expansive luxury, defining a new standard of elegance. From sophisticated studios to luxurious 2 bedroom apartments, each beautifully designed space has been created to offer the very best in contemporary living.

33 floors

BUILDING STRUCTURE

288

RESIDENTIAL UNITS

Up to 1,527

SQ.FT. SIZE

AED 1.2 M

STARTING PRICE

Waterfront

VIEWS

Q1 2026

HANDOVER DATE





Luxury detail

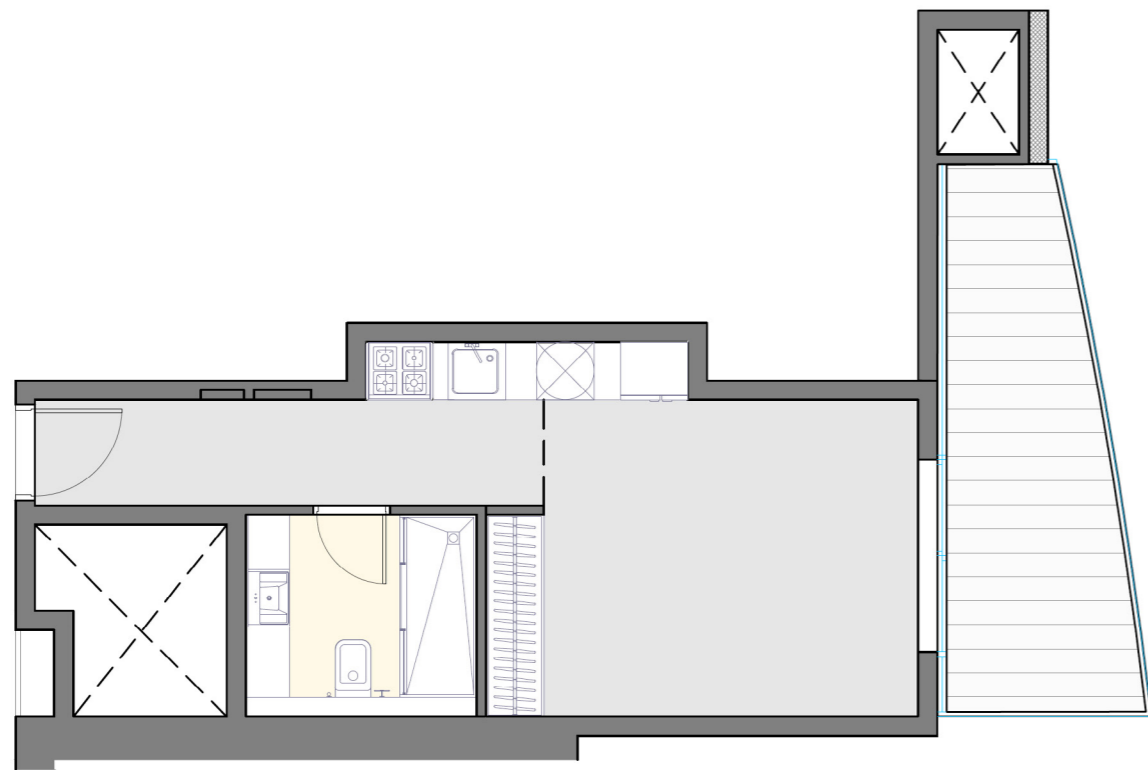
The Pelagos views and Dubai Marina lifestyle deserve the very best interiors. Every residence is finished to the highest specifications, so you can enjoy the ease and luxury you're looking for.

- Fully porcelain-tiled bathrooms.
- Porcelain tile flooring.
- Vanity units with porcelain countertops and mirrors.
- Wall-mounted WC, under-counter wash basin, and European brand mixers.
- Built-in European brand appliances (microwave, hob, oven, refrigerator) and free-standing washing machine.
- HPL kitchen cabinets with porcelain countertops.
- Built-in wardrobes with high-quality finish.
- Wooden doors with veneer finish.
- Smart home system.
- European-made thermal-break aluminium sections with double-glazed windows.
- High-quality painted walls.

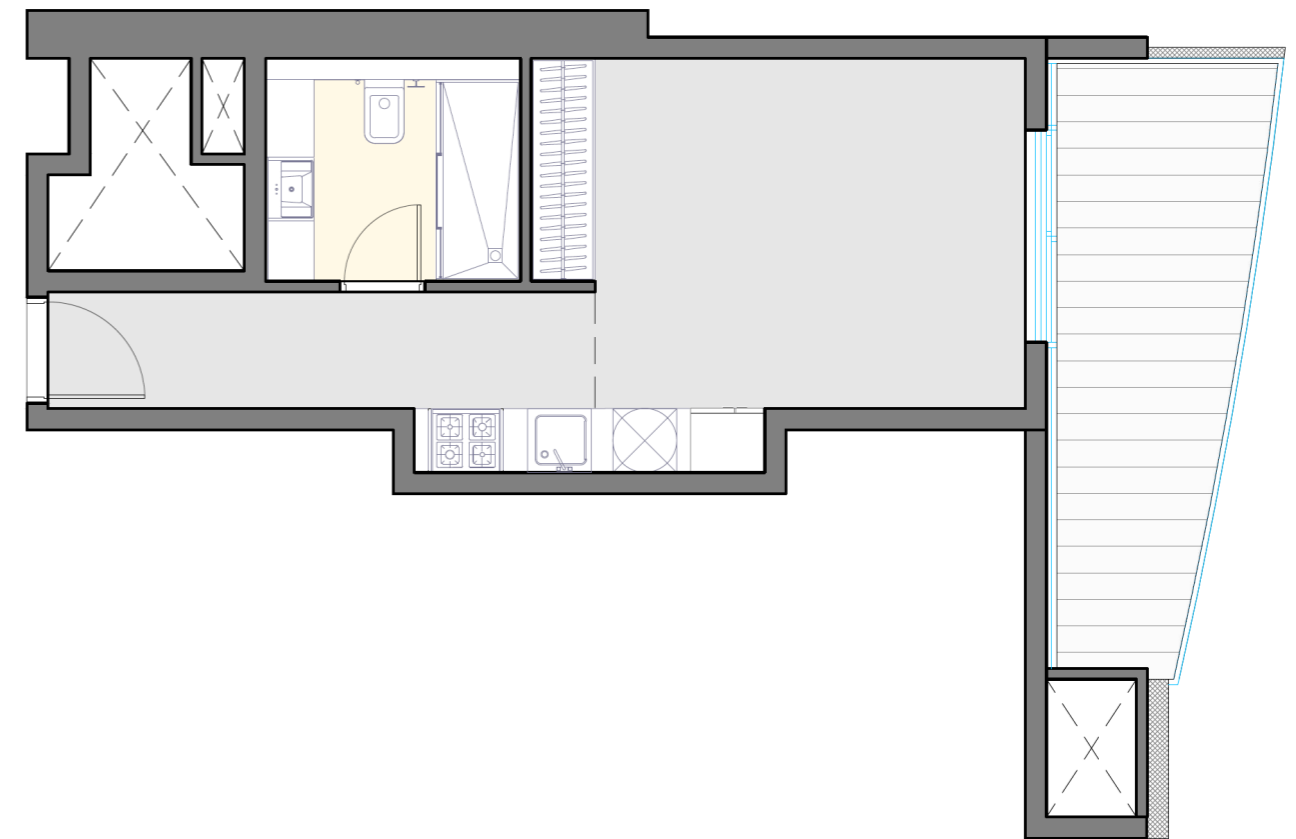


Studio

Type A1



Type A2



18

Total area

451.55 SQ.FT

Unit area

331.21 SQ.FT

Balcony area

120.34 SQ.FT

Total area

459.83 SQ.FT

Unit area

340.46 SQ.FT

Balcony area

119.37 SQ.FT





Sports
with
you

THE ATLAS MOUNTAINS
DOLOMITES



Studio

Type B



Total area
380.83 SQ.FT

Unit area
330.02 SQ.FT

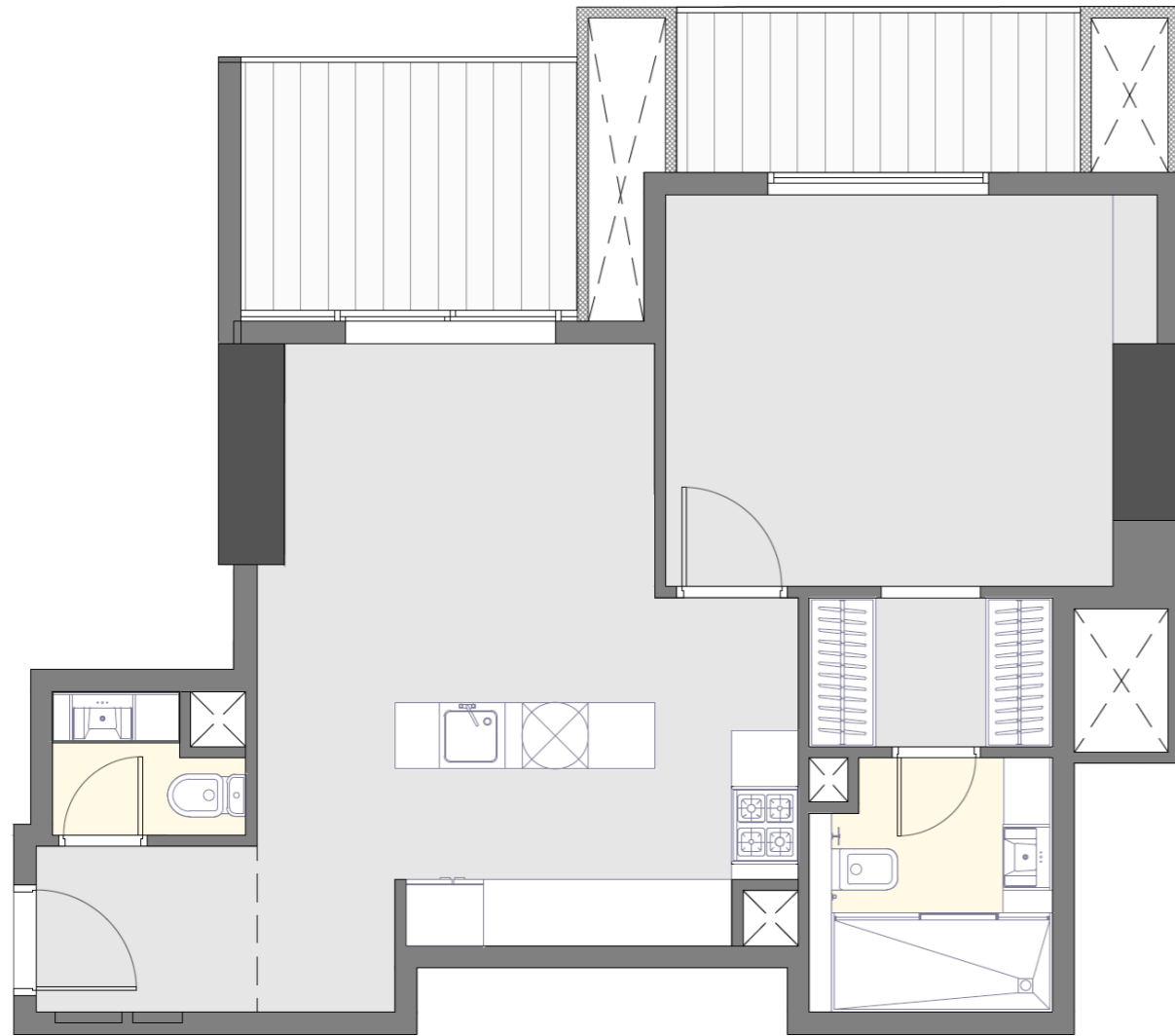
Balcony area
50.81 SQ.FT



01 Bedroom

Type A1

Type A2



Total area
763.48 SQ.FT

Unit area
615.70 SQ.FT

Balcony area
147.79 SQ.FT

Total area
773.82 SQ.FT

Unit area
626.03 SQ.FT

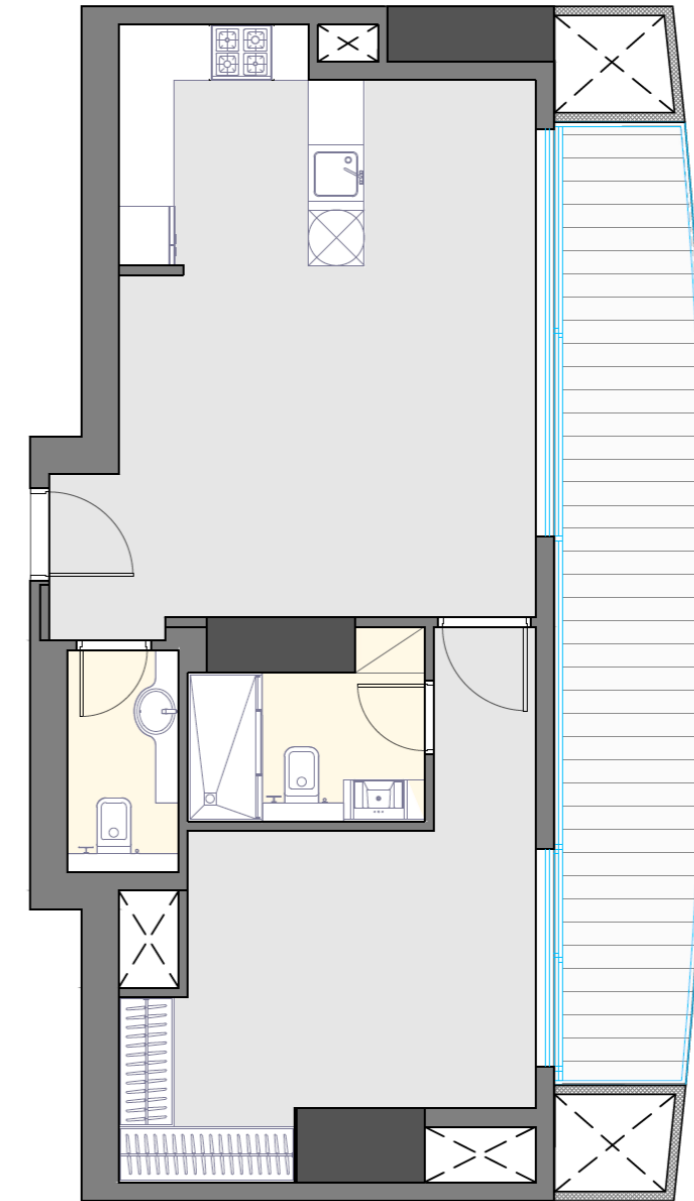
Balcony area
147.79 SQ.FT



24

01 Bedroom

Type B



Total area

833.88 SQ.FT

Unit area

647.34 SQ.FT

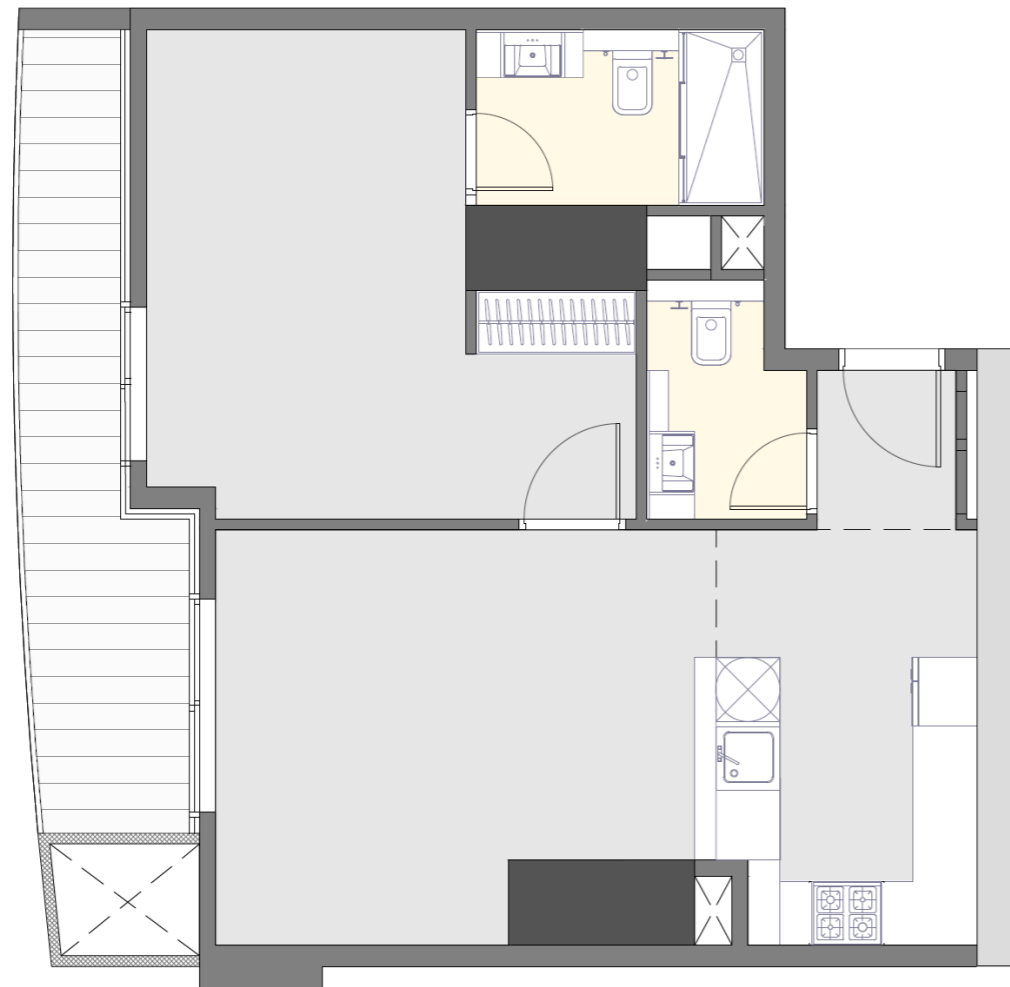
Balcony area

186.54 SQ.FT

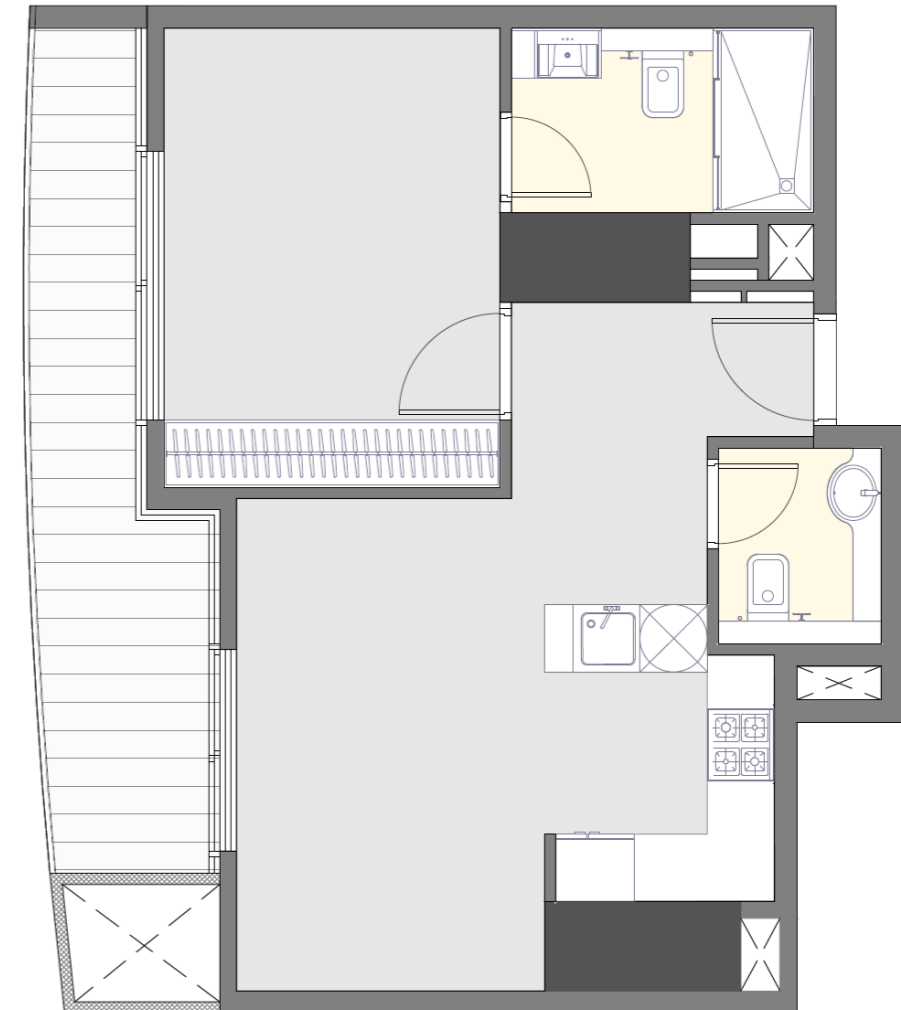


01 Bedroom

Type C1



Type C2



26

Total area
758.53 SQ.FT

Unit area
645.73 SQ.FT

Balcony area
112.81 SQ.FT

Total area
633.03 SQ.FT

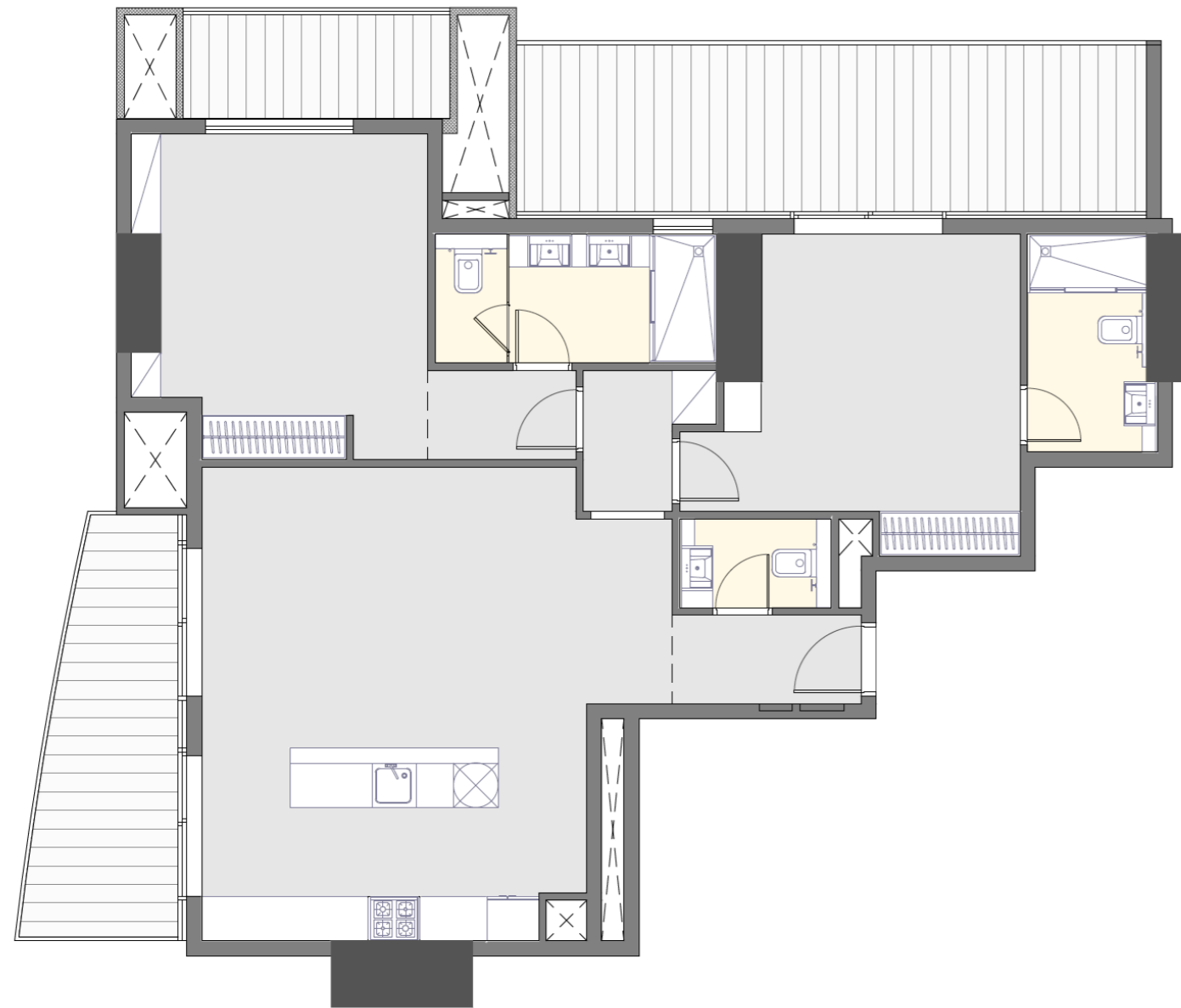
Unit area
518.50 SQ.FT

Balcony area
114.53 SQ.FT

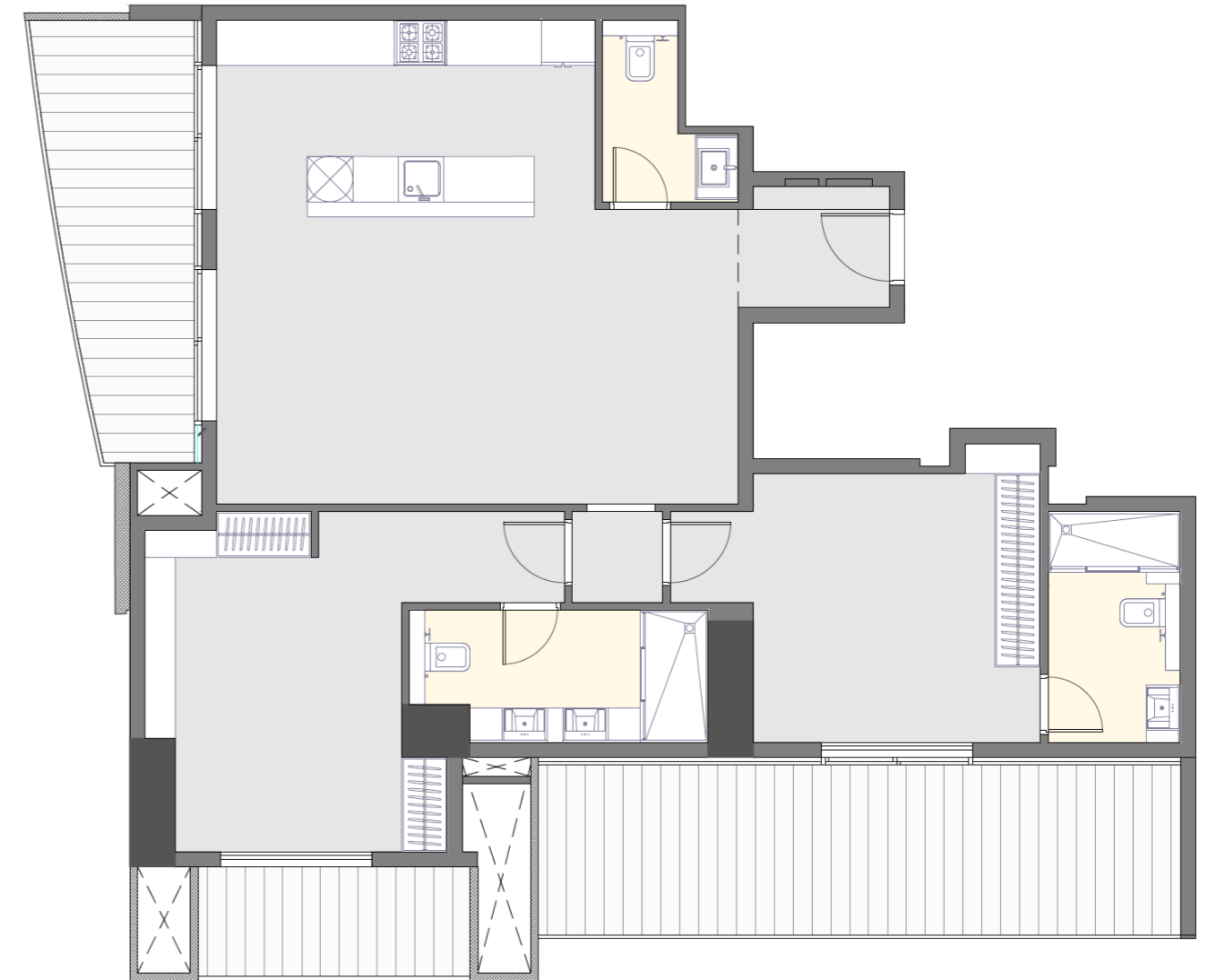


02 Bedroom

Type A1



Type A2



28

Total area

1,491.34 SQ.FT

Unit area

1,073.27 SQ.FT

Balcony area

418.07 SQ.FT

Total area

1,525.78 SQ.FT

Unit area

1,105.35 SQ.FT

Balcony area

420.44 SQ.FT



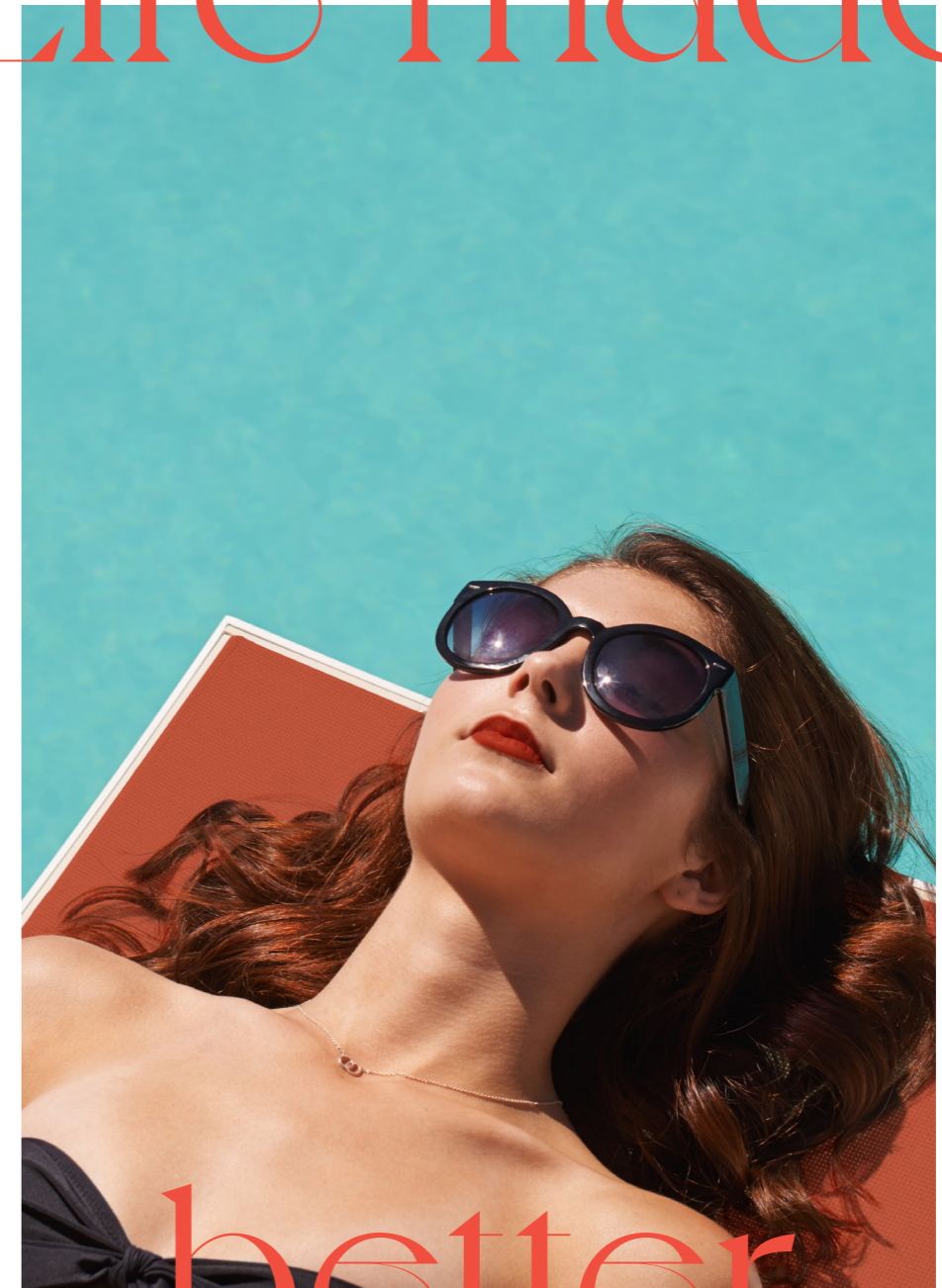






32

Life made



better

THE AMENITIES

At Pelagos, we take care of every aspect of life, from soul-soothing wellbeing to exclusive entertainment.



Infinite indulgence



Start your day in our state-of-the-art gym, take a refreshing dip in the pool or simply unwind in the chic outdoor lounge.

No matter how you choose to spend your time, Pelagos is always brimming with many possibilities.





PELAGOS

BY IGO

WWW.PELAGOSBYIGO.COM

DEVELOPED BY



PRESENTED BY

EVOLUTIONS

800 EVOL (3865)
INFO@EVOLUTIONS.AE